



Metal Plate & Tag Supplies

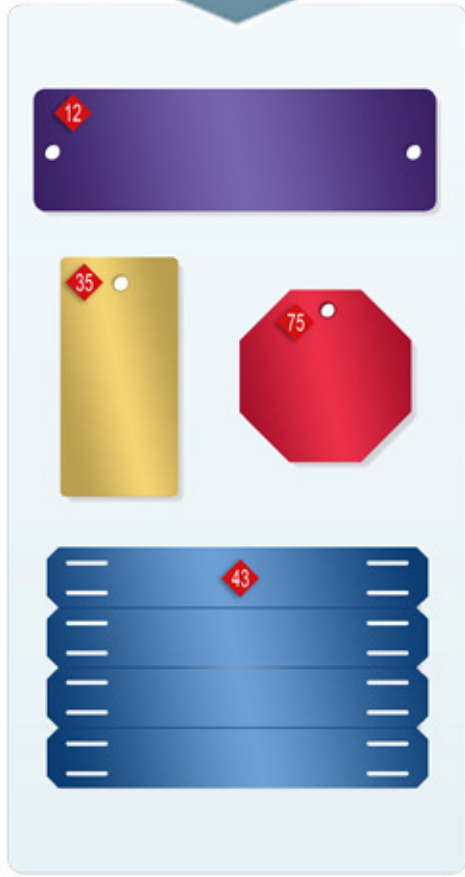
Basic Rectangular Plates



Strip & Cable Tags



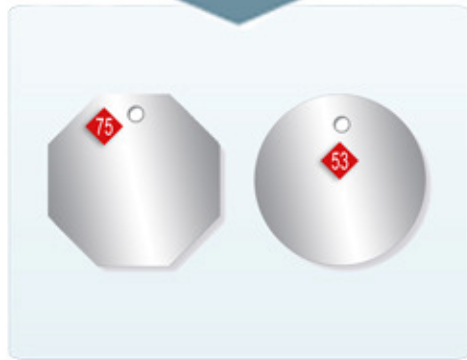
Colored Plates & Tags



Military Dog Tags



Round Tags & Other Small Tags



About CIM USA Inc.

CIM USA Inc. is a manufacturer of metal tag embossing machines, supplying leading industrial manufacturers solutions for product marking and traceability, and, the U.S. Military reliable machines to produce dog tags and medical alert tags.

We pride ourselves on working hard to meet the needs of our vast client base and the growing demands of the fast paced business environment. With our new ecommerce platform for metal plates and tags, you now have the ease and convenience of ordering online for the fastest, most efficient method of receiving the products you need.

If you don't see the exact metal plate or tag you need, please contact us and we will be happy to provide you with the size and specs to meet your requirements. We are gradually expanding our product base and are happy to add a product to make your ordering easier in the future. If you have a special requirement, give contact us, we have the ability to fulfill special or custom orders.

10

Size=1.56" x 3.50"

Hole & Slot Options

# 000 = no holes	# 125 = (1) .125" hole	# 225 = (2) .250" holes
# 112 = (1) .125" hole	# 137 = (1) .375" hole	# 1LG = (1) .125" x .500" slot
# 115 = (1) .156" hole	# 212 = (2) .125" holes	# 4RL = (4) .062" x .400" slots
	# 215 = (2) .156" holes	

11

Size=1.00" x 3.50"
(rolled edge)

Hole Options # 125 = (1) .250" hole

12

Size=1.06" x 3.50"

Hole & Slot Options

# 115 = (1) .156" hole	# 215 = (2) .156" holes
# 125 = (1) .250" hole	# 225 = (2) .250" holes
# 137 = (1) .375" hole	# 420 = (4) .200" holes
	# 4RL = (4) .062" x .400" slots

13

Size=1.57" x 3.15"

Hole Options

000 = no holes
115 = (1) .156" hole
215 = (2) .156" holes

14

Size = .68" x 3.30"

Hole Options

# 000 = no holes	# 112 = (1) .125" hole
	# 212 = (2) .125" holes

20

Size = 1.12" x 2.00"

Hole & Slot Options

000 = no holes
114 = (1) .140" hole
214 = (2) .140" holes
2RL = (2) .062" x .400" slots

Military Dog Tag
(rolled edge)
See back for
accessories

21

Size = 1.12" x 2.00"

Hole Options

000 = no holes
112 = (1) .125" hole
125 = (1) .250" hole
212 = (2) .125" holes

24

Size = 1.00" x 2.00"

Hole Options

000 = no holes
121 = (1) .218" hole

32

Size = 1.72" x 3.50"

Hole Options

# 000 = no holes	# 118 = (1) .188" hole
# 115 = (1) .156" hole	# 215 = (2) .156" holes
	# 218 = (2) .188" holes

31

Size = 2.12" x 3.37"

Hole & Slot Options

# 000 = no holes	# 137 = (1) .375" hole (centered)
# 115 = (1) .156" hole	# 150 = (1) .500" hole
# 118 = (1) .188" hole (in corner)	# 215 = (2) .156" holes
# 120 = (1) .203" hole (in corner)	# 225 = (2) .250" holes
# 125 = (1) .250" hole (centered)	# 415 = (4) .156" holes
	# 1LG = (1) .125" x .500" slot
	# 2TN = (2) .188" x .063" slots

34

Size = 2.00" x 3.00"

Hole & Slot Options

000 = no holes
112 = (1) .125" hole
212 = (2) .125" holes
HLG = (1) .125" x .500" luggage slot

35

Size = 1.10" x 2.25"

Hole Options

000 = no holes
115 = (1) .156" hole
112 = (1) .125" hole
212 = (2) .125" holes

33

Size = 1.72" x 3.50"

Hole & Slot Options

# 000 = no holes	# 209 = (2) .093" holes
# 109 = (1) .093" hole	# 215 = (2) .156" holes
# 115 = (1) .156" hole	# 221 = (2) .216" holes
# 118 = (1) .188" hole	# 225 = (2) .250" holes
# 125 = (1) .250" hole	# 420 = (4) .200" holes
# 128 = (1) .281" hole	# 425 = (4) .250" holes
# 150 = (1) .500" hole	# 2TN = (2) .188" x .063" slots

36 Size = .62" x 3.31" # 112 = (1) .125" hole
Hole & Slot Options # 212 = (2) .125" holes
 # 000 = no holes # 4RL = (4) .062" x .400" slots

38
 Size = 1.53" x 2.69"
Hole Options # 156 = (1) .156" hole
 # 000 = no holes # 212 = (2) .125" holes
 # 112 = (1) .125" hole # 215 = (2) .156" holes

42
 Size = 2.12" x 3.37"
Hole & Slot Options
 # 000 = no holes # 215 = (2) .156" holes
 # 115 = (1) .156" hole # 4RL = (4) .062" x .400" slots

46
 Size = 1.72" x 3.50"
Hole & Slot Options
 # 000 = no holes # 215 = (2) .156" holes
 # 115 = (1) .156" hole # 4RL = (4) .062" x .400" slots

67
 Size = 2.36" x 3.39"
Hole Options
 #000 = no holes • #115 = (1) .156" hole • #215 = (2) .156" holes

37
 Size = 1.37" x 3.75"
Hole Options # 121 = (1) .218" hole
 # 000 = no holes # 221 = (2) .218" holes

41
 Size = 2.12" x 3.37"
Hole & Slot Options
 # 000 = no holes # 215 = (2) .156" holes
 # 115 = (1) .156" hole # 225 = (2) .250" holes
 # 125 = (1) .250" hole # 4RL = (4) .062" x .400" slots

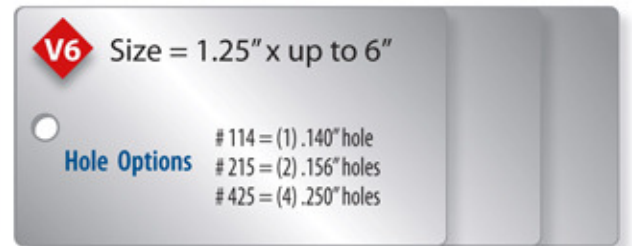
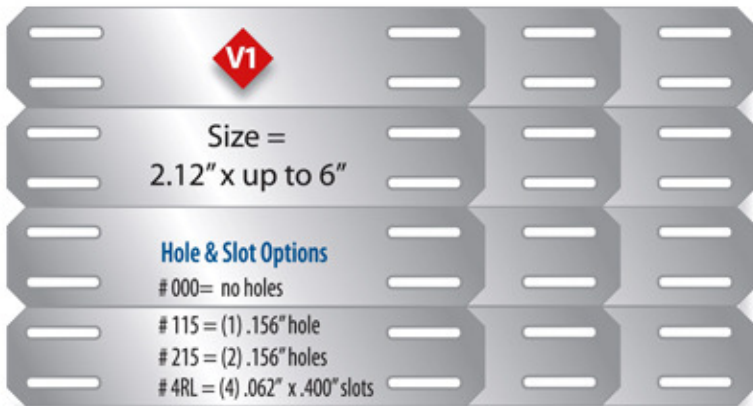
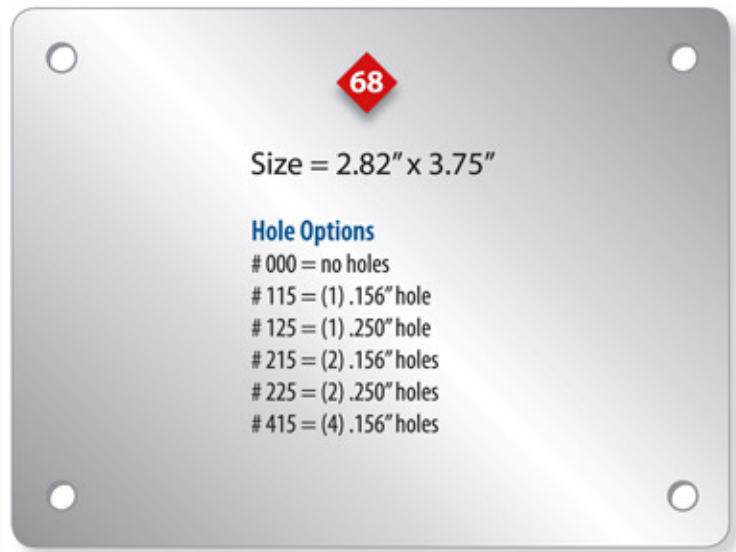
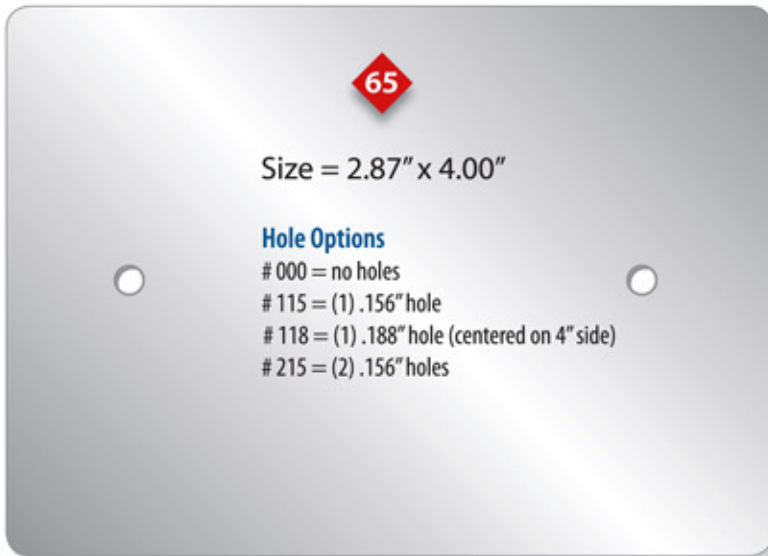
43
 Size = 2.12" x 3.37"
Hole & Slot Options
 # 000 = no holes # 215 = (2) .156" holes
 # 115 = (1) .156" hole # 218 = (2) .188" holes
 # 118 = (1) .188" hole # 219 = (2) .198" holes
 # 119 = (1) .198" hole # 4RL = (4) .062" x .400" slots

50
 Size = 2.12"
Hole Options
 # 000 = no holes
 # 112 = (1) .125" hole
 # 125 = (1) .250" hole

51
 Size = 1.87" x 2.42"
Hole Options
 # 000 = no holes
 # 115 = (1) .156" hole

53
 Size = 1.50"
Hole Options
 # 000 = no holes
 # 112 = (1) .125" hole
 # 125 = (1) .250" hole

54
 Size = 1.00"
Hole Options
 # 000 = no holes
 # 112 = (1) .125" hole
 # 125 = (1) .250" hole



The chart on the following page shows all variations of metal plates and tags we offer. Currently, we do not list all product variations on our ecommerce website www.metalplatesandtags.com. If you see a particular product on the chart that you need, please don't hesitate to contact us.

Custom orders are available – if you don't see the exact product you need on our brochure or online store, please contact us, we would be happy to work with you to meet your requirements. Please note that custom orders may incur additional set-up fees.

Standard product pricing is listed on our website, or feel free to contact us for pricing, or any additional questions you may have.

Thank you for your interest, we look forward to working with you!

